

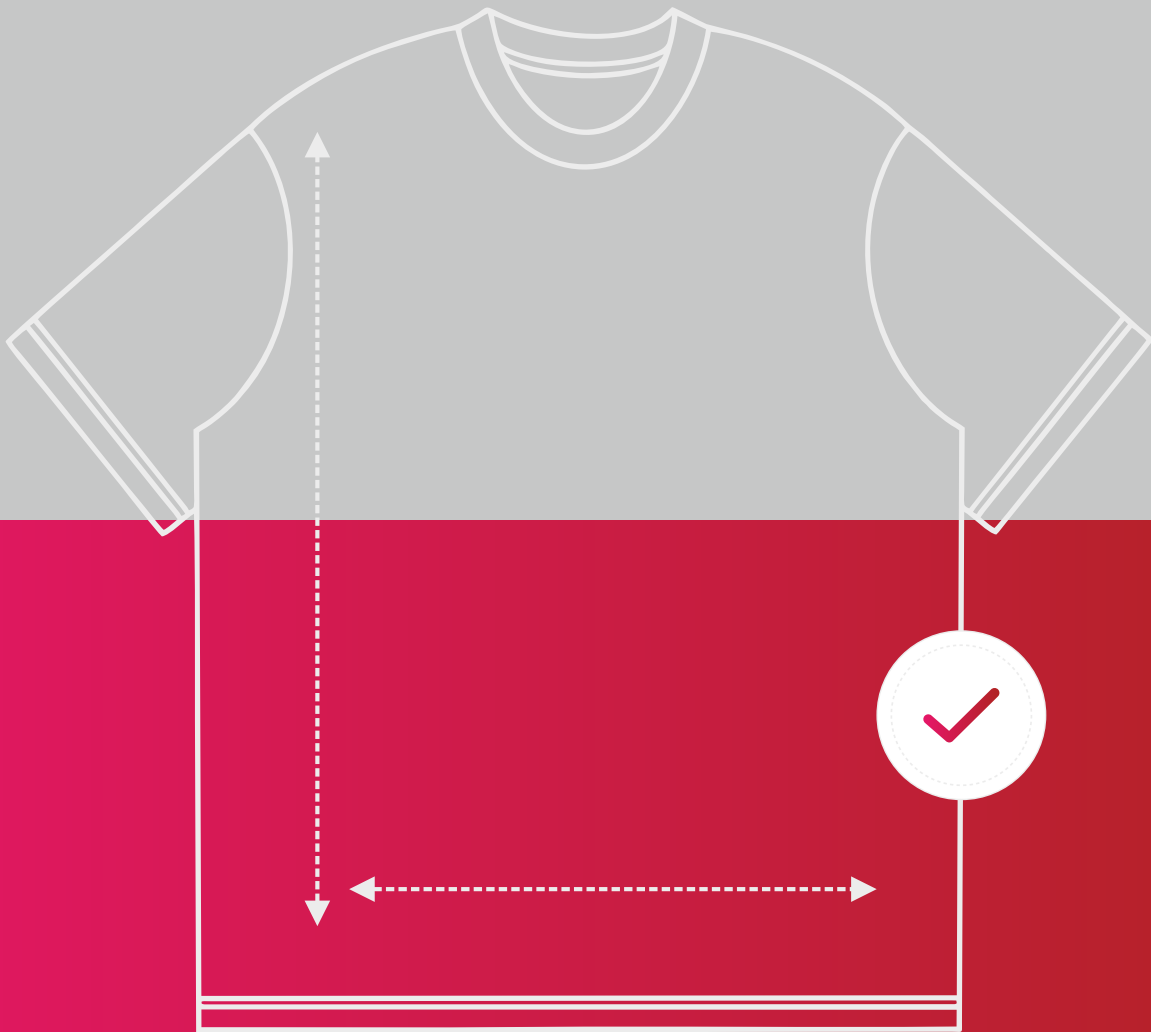
APPAREL SIZE CHART

CHOOSE RIGHT.



SPENTACORP®

DELIVERING GOODWILL



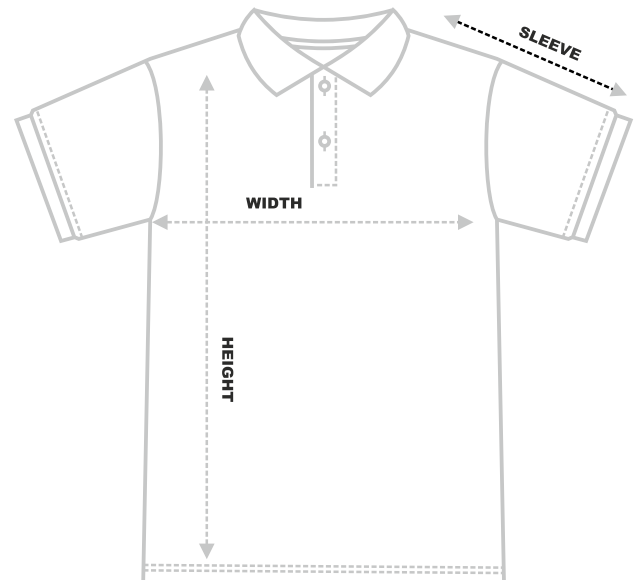
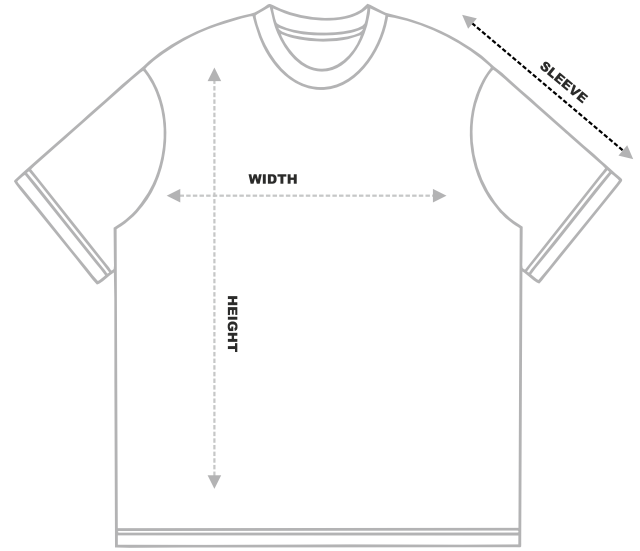
www.spentacorp.com

APPAREL SIZE CHART

CHOOSE RIGHT.



SIZE	CHEST	LENGTH	SLEEVE
S	38	26	7.0
M	40	27	7.5
L	42	28	8.0
XL	44	29	8.5
XXL	46	30	9.0



Measurements / labels may vary with brands.

- **GARMENT: KNITS**
- **STYLE: UNISEX ROUND NECK AND POLO T-SHIRTS**
- **UOM: INCHES**

APPAREL SIZE CHART

CHOOSE RIGHT.



SIZE	CHEST	LENGTH	SLEEVE
S	44	24	23
M	46	26	24
L	48	28	25
XL	50	30	26
XXL	52	32	27



Measurements / labels may vary with brands.

- **GARMENT:** WOVEN
- **STYLE:** UNISEX LONG SLEEVE JACKETS
- **UOM:** INCHES

APPAREL SIZE CHART

CHOOSE RIGHT.



SIZE	CHEST	LENGTH	SLEEVE
S	39	27	25
M	41	28	26
L	43	29	27
XL	45	30	28
XXL	49	31	29



Measurements / labels may vary with brands.

- **GARMENT:** KNIT
- **STYLE:** UNISEX HOODIES
- **UOM:** INCHES

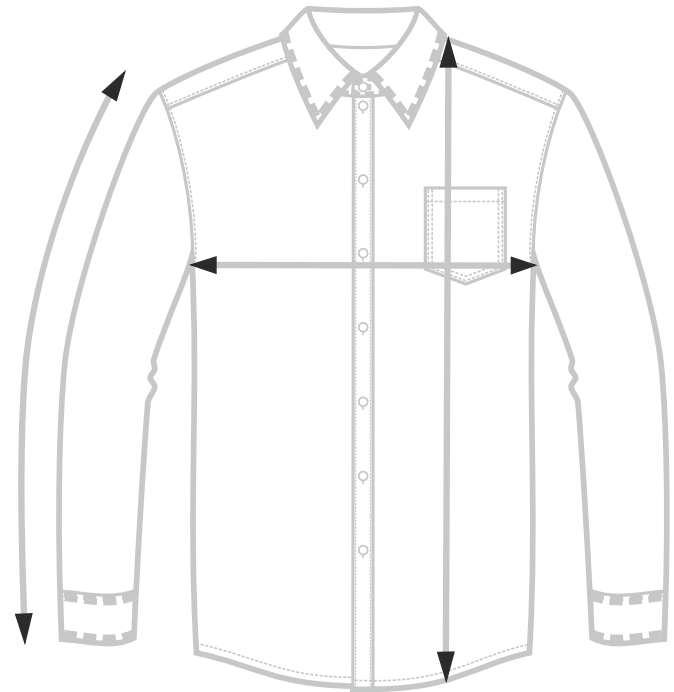
APPAREL SIZE CHART

CHOOSE RIGHT.



SPENTACORP[®]
DELIVERING GOODWILL

SIZE	CHEST	LENGTH	SLEEVE
S-38	39.0	28	24
M-40	42.5	29	25
L-42	45.5	30	26
XL-44	48.5	31	27
XXL-46	52.5	32	28



Measurements / labels may vary with brands.

- **GARMENT:** WOVEN
- **STYLE:** MEN'S FORMAL SHIRT
- **UOM:** INCHES

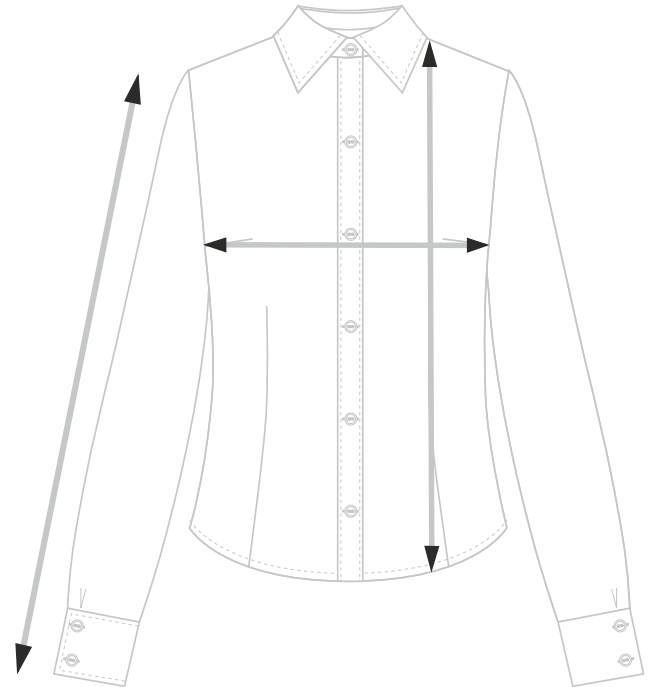
APPAREL SIZE CHART

CHOOSE RIGHT.



SPENTACORP[®]
DELIVERING GOODWILL

SIZE	BUST	LENGTH	SLEEVE
S	34	63	59
M	36	65	60
L	38	67	61
XL	40	68	62
XXL	42	69	63



Measurements / labels may vary with brands.

- **GARMENT:** WOVEN
- **STYLE:** WOMEN'S FORMAL SHIRT
- **UOM:** CMS



APPAREL TOLERANCES

In garment making, small variations are normal. Differences in fabric, dye, stitching, and even washing results happen because materials naturally react to tension, humidity, and heat. To keep things practical and fair, the industry accepts tolerance limits - a safe range where tiny changes are allowed but major defects are not. This helps ensure good fit and lasting color, without rejecting products for minor, harmless differences.

Why tolerances matter?

They protect customers by ensuring clothes fit well and look good after regular use.

They reduce waste and cost, keeping garments affordable.

They prevent unfair rejections that would delay deliveries and increase prices.

What's considered acceptable?

- **Size:** Measurements can vary slightly (about $\pm 1-2$ cm depending on garment type).
-
- **Shrinkage after washing:** Around 3% for woven fabrics and up to 5% for knits.
-
- **Color:** Slight shade differences between batches can happen, but dyes must still be durable.
-
- **Color fastness:** Garments are tested to make sure color doesn't fade or bleed easily when washed or rubbed.